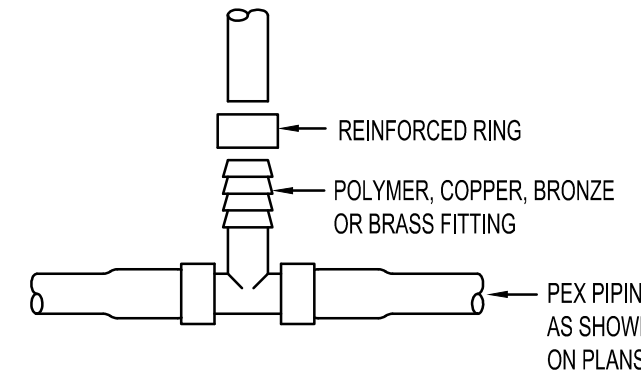


THIS TYPE (COLD EXPANSION) OF FITTING REQUIRES THAT THE PEX PIPING, WITH REINFORCING PEX RING PLACED OVER THE END OF THE PIPE. IS EXPANDED BEFORE THE FITTING IS INSERTED INTO THE PIPE END. THE EXPANDED PIPE END IS ALLOWED TO RETRACT ONTO THE FITTING TO FORM THE SEAL. THE MEMORY OF THE PIPE ALLOWS IT TO TIGHTEN OVER THE FITTING. AN EXPANDER TOOL IS REQUIRED TO EXPAND THE PIPE AND THE PEX RING TOGETHER.

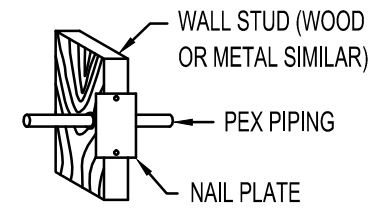
ALL JOINTS (TEES, ELBOWS, COUPLINGS, ETC.) ARE JOINED SIMILARLY.



NOTE: STAINLESS STEEL CAMP BANDS ARE ALSO PERMITTED FOR REINFORCING RING.

**A PEX PIPING DETAILS**

NO SCALE



**WALL INSTALLATION**

PIPE SUPPORTS: PLASTIC HANGERS AND STRAPS ARE RECOMMENDED. BUT METAL SUPPORTS WHICH ARE DESIGNED FOR USE WITH PLASTIC TUBING CAN BE USED.

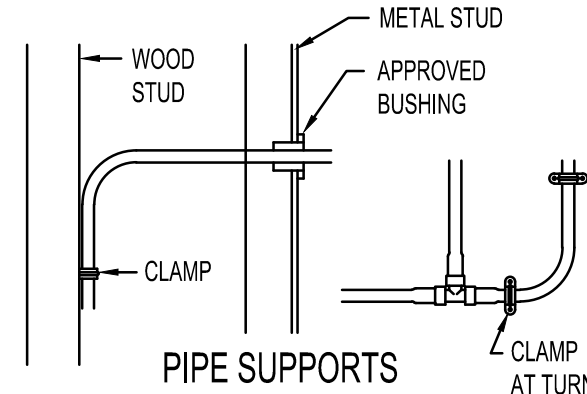
DO NOT USE SUPPORTS THAT PINCH OR CUT THE TUBING. SUPPORT SHOULD ALLOW FREE TUBING MOVEMENT.

INSPECT ALL SUPPORTS PRIOR TO INSTALLATION TO ENSURE THAT SHARP EDGES DO NOT EXIST THAT CAN DAMAGE THE TUBING.

DO NOT USE IN ANY APPLICATION WHERE TUBING WILL BE EXPOSED TO DIRECT SUNLIGHT.

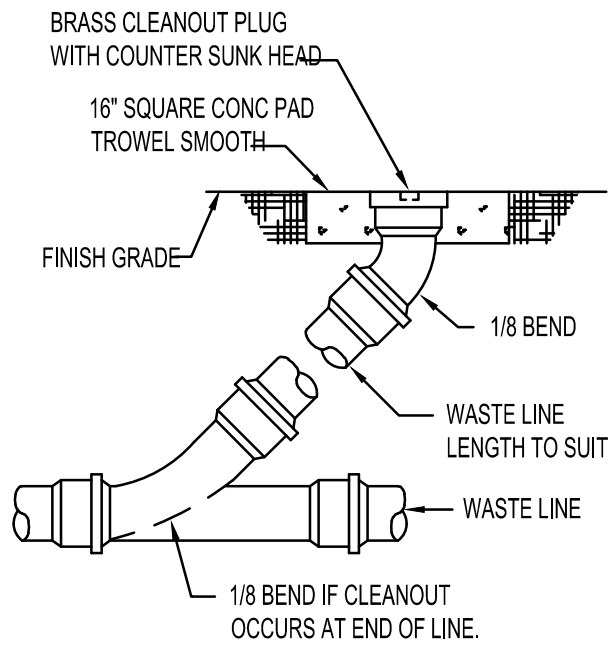
VERTICAL TUBING TO BE SUPPORTED EVERY 8'-0" WHEN PENETRATING METAL STUDS. UTILIZE A BUSHING DESIGNED FOR PLASTIC TUBING.

SUPPORTS SHALL BE INSTALLED AT CHANGES IN DIRECTION TO RELIEVE STRESS AS SHOWN.

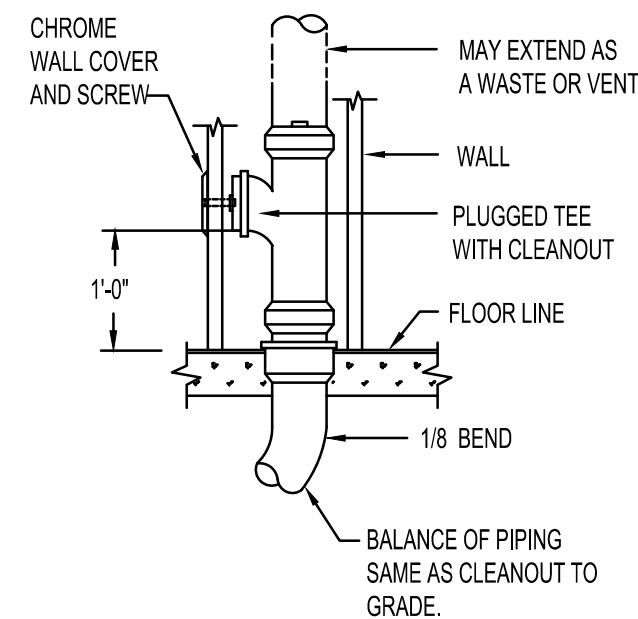


**D PEX PIPE INSTALLATION DETAILS**

NO SCALE



**CLEANOUT TO GRADE (COTG)**



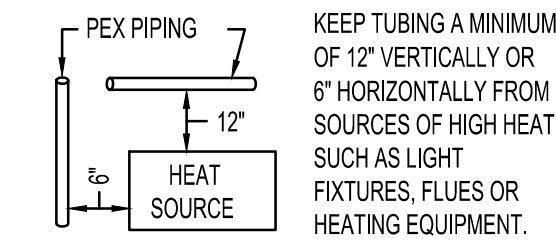
**WALL CLEANOUT (WCO)**

**G CLEAN OUT DETAILS**

NO SCALE

**B EXTERIOR HOSE BIBB**

NO SCALE

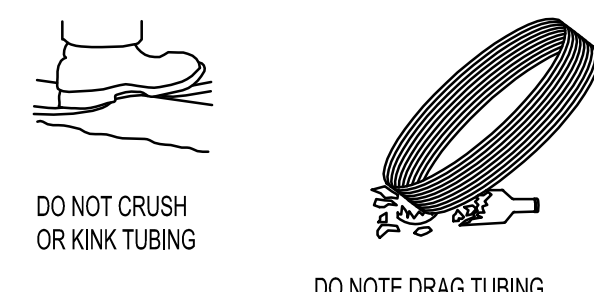


KEEP TUBING A MINIMUM OF 12" VERTICALLY OR 6" HORIZONTALLY FROM SOURCES OF HIGH HEAT SUCH AS LIGHT FIXTURES, FLUES OR HEATING EQUIPMENT.

NOTE: USE ONLY CONTINUOUS LENGTH TUBING (NO FITTINGS) WHEN INSTALLING PEX UNDER OR WITHIN A SLAB. PROTECT PEX TUBING WITH NONMETALLIC SLEEVES WHERE IT PENETRATES A SLAB OR FOUNDATION WALL.

**MIN. CLEARANCES**

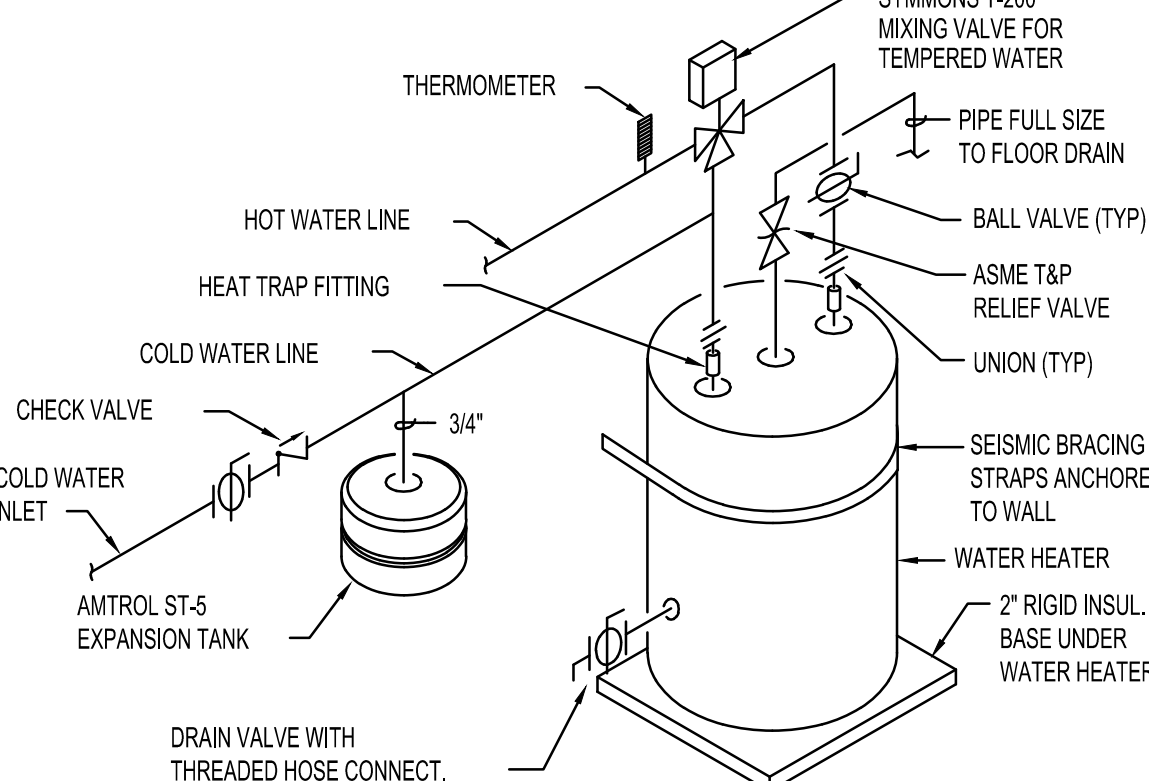
TUBING SIZE	MIN. RADIUS BENDING
3/8"	4"
1/2"	5"
3/4"	7"
1"	9"



TUBING AND FITTINGS SHALL BE STORED UNDERCOVER FOR CLEANLINESS AND TO AVOID EXPOSURE TO SUNLIGHT. CONSULT MANUFACTURER FOR RECOMMENDED LIMITS TO OUTSIDE STORAGE.

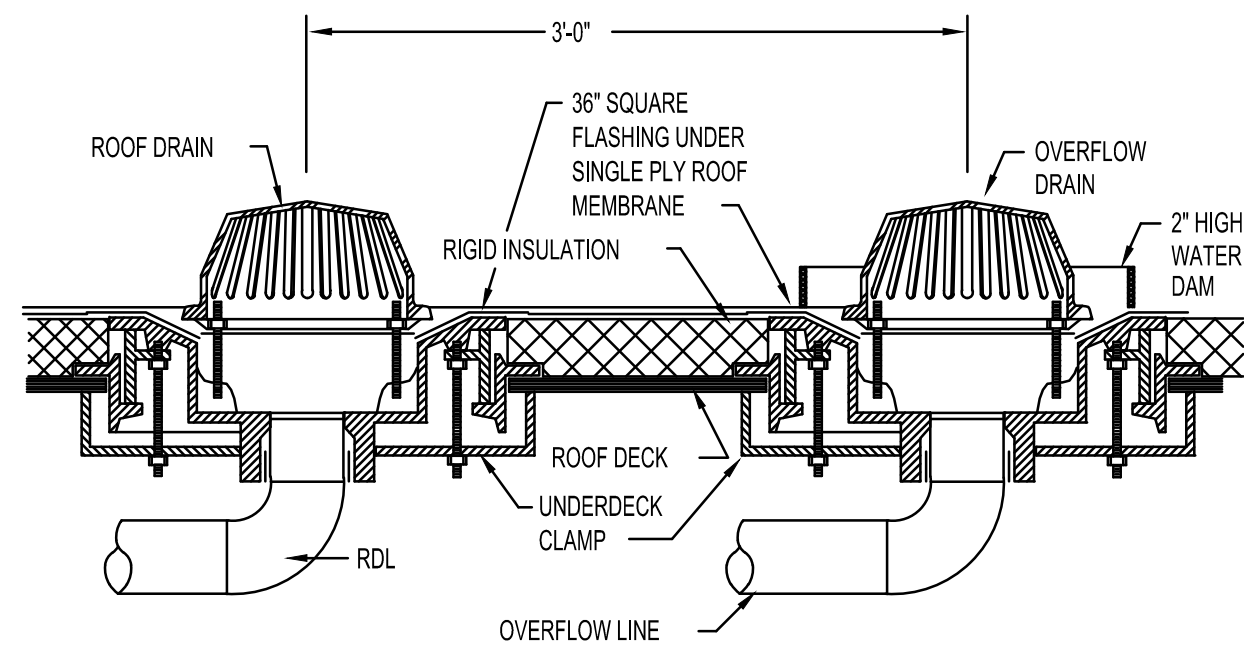
**E PEX PIPE HANDLING DETAILS**

NO SCALE



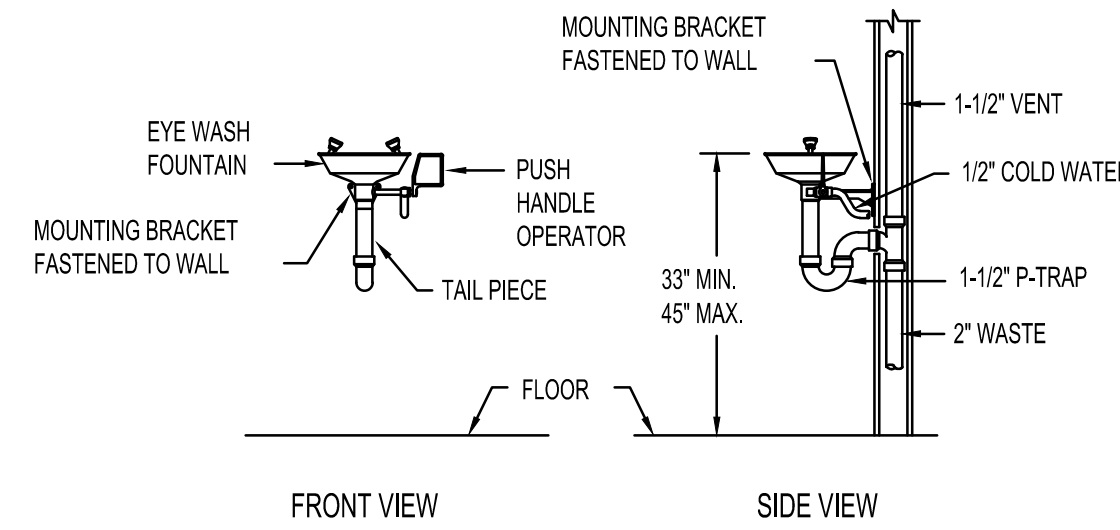
**H WATER HEATER PIPING DIAGRAM**

NO SCALE



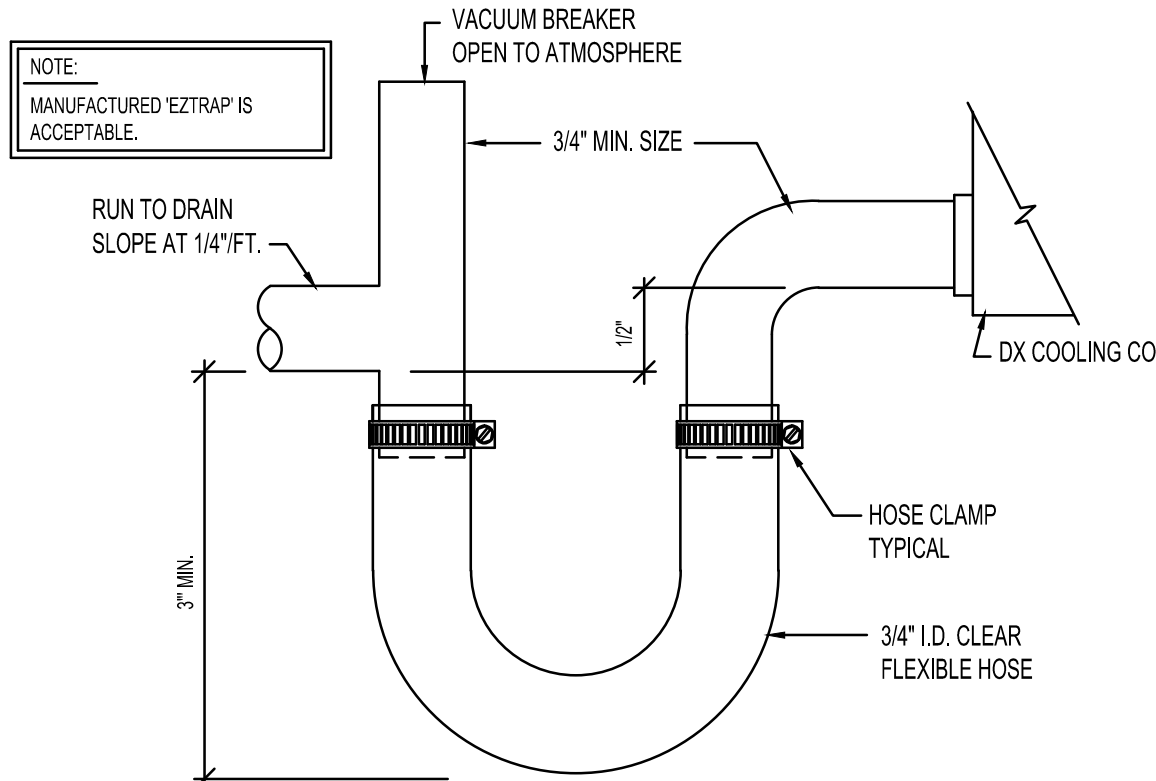
**C ROOF DRAIN DETAIL**

NO SCALE



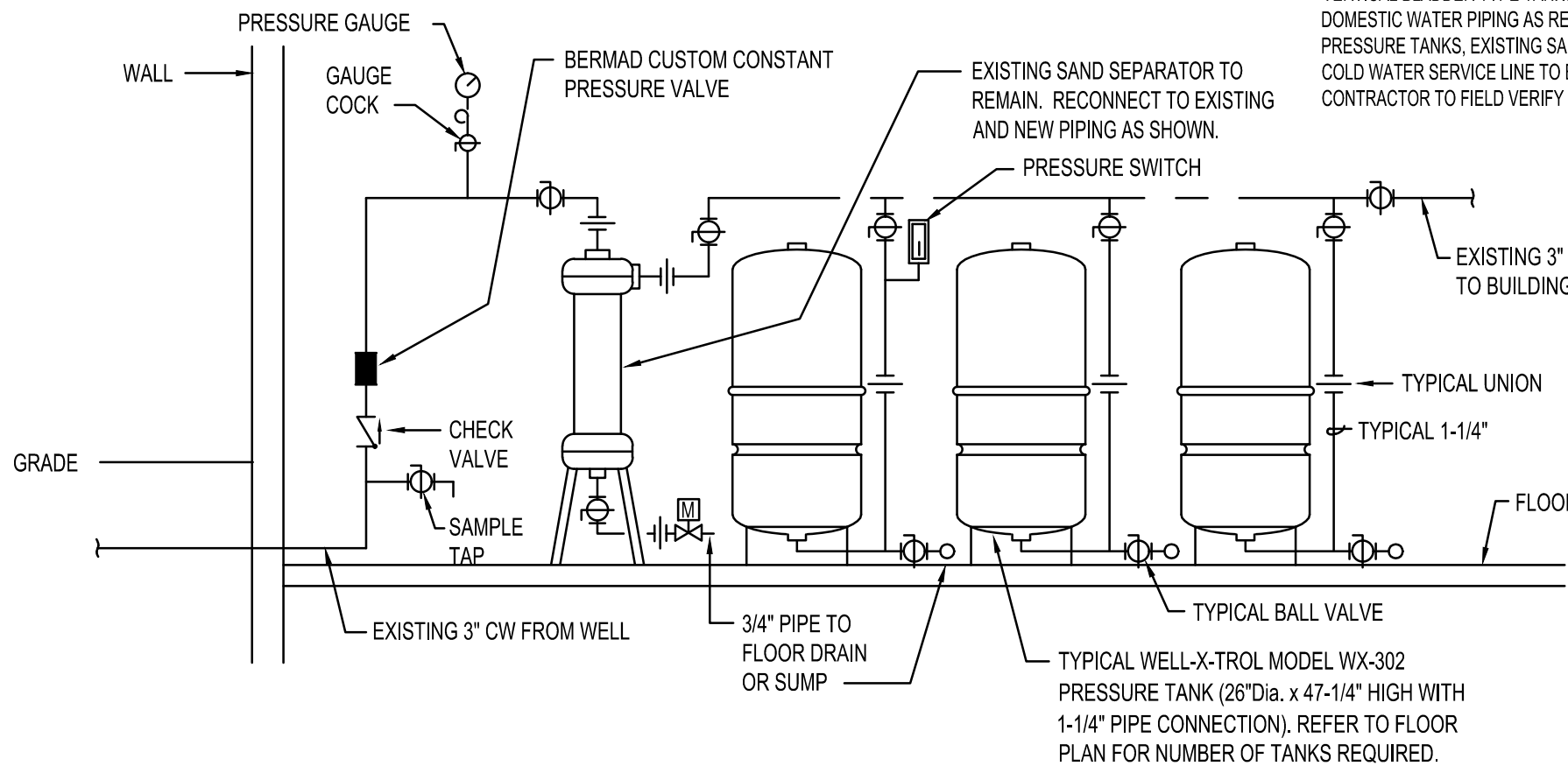
**F EMERGENCY EYEWASH INSTALLATION DETAIL**

NO SCALE



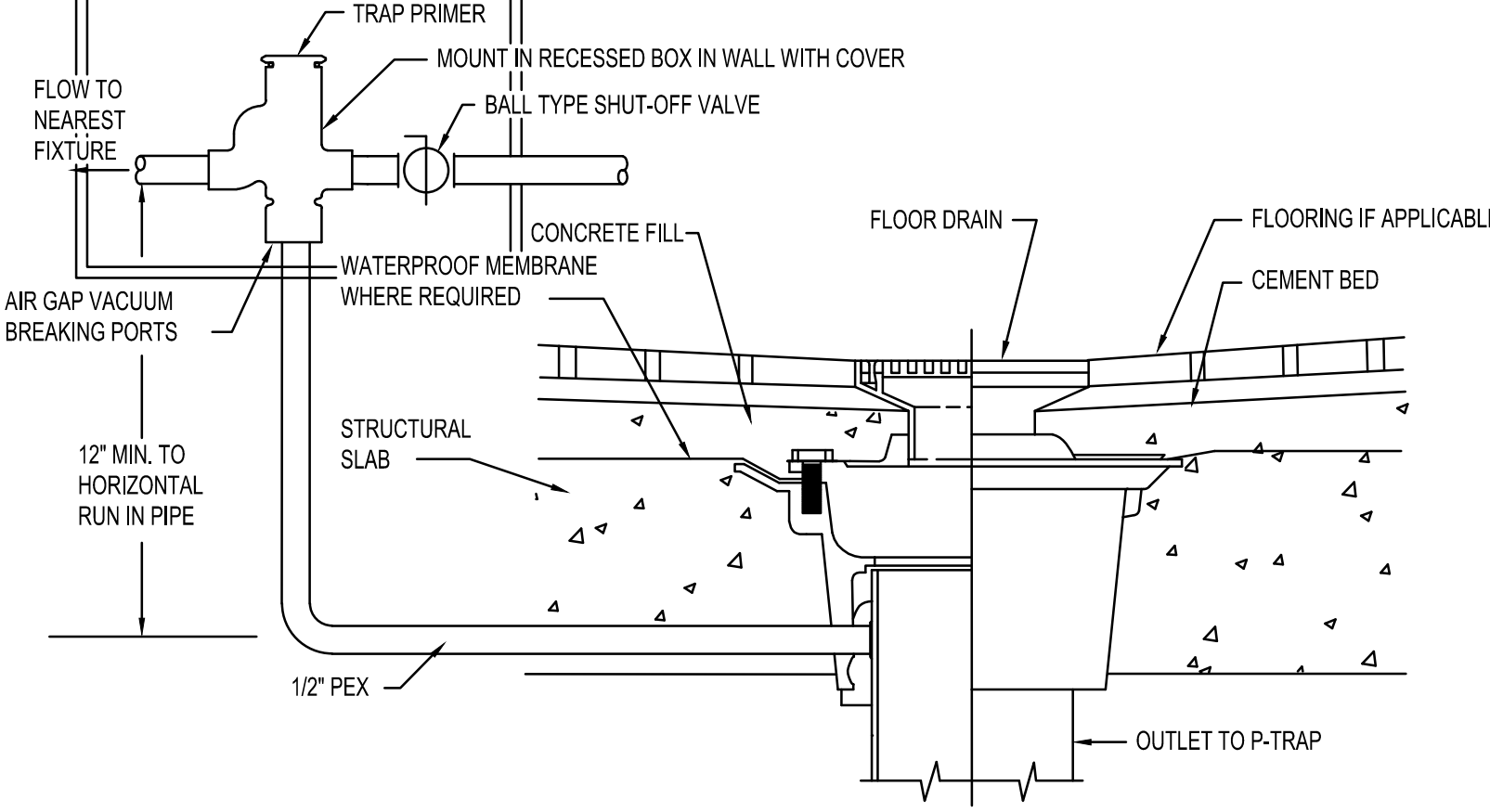
**J CONDENSATE TRAP DETAIL**

NO SCALE



**K WELL TANK PIPING DIAGRAM**

NO SCALE



**L TRAP PRIMER DETAIL FOR SINGLE DRAIN**

NO SCALE

FIXTURE SCHEDULE					
SYM.	DESCRIPTION	HOT	COLD	WASTE	VENT
CS-1	CLASSROOM SINK - ELKAY PSDK42517C STAINLESS STEEL SINK WITH LK20678L GOOSENECK FAUCET, LK11414 FLEX GUARD BUBBLER, LK35 STRAINER, 1/2" STOPS AND 1-1/2" P-TRAP. PROVIDE RIGHT OR LEFT HANDLER CONFIGURATION AS REQUIRED.	1/2"	1/2"	1-1/2"	1-1/2"
DF-1	BLEVEL DRINKING FOUNTAIN - ELKAY MODEL L2ZSL8WSLK WITH BOTTLE FILLER STATION AND FILTER. FRONT BAR OPERATORS, 1/2" STOP, 1-1/2" P-TRAP, AND FLEX-GUARD SAFETY BUBBLER. (120601)	--	1/2"	1-1/2"	1-1/2"
EW-1	EMERGENCY EYEWASH - HHW MODEL 7208B WALL MOUNTED EYE WASH WITH 1" DIA. PLASTIC RECEPTOR, ALUMINUM WALL BRACKET AND STAY-OPEN VALVE. RUN 1-1/2" WASTE LINE TO ADJACENT SERVICE SINK. REFER TO DETAIL FP3.1	--	1/2"	1-1/2" TO SERVICE SINK	--
FD-1	2" FLOOR DRAIN - ZURN Z-415 WITH TYPE 'B' 5" DIA. NICKEL-BRONZE STRAINER, 2" DEEP SEAL P-TRAP AND TRAP PRIMER CONNECTION.	--	1/2"	2"	2"
FS-1	FLOOR SINK WITH HALF GRATE - ZURN Z-1900-2 WITH 1/2" GRATE, DOME STRAINER, WHITE ENAMEL FINISH, 4" DEEP SEAL P-TRAP AND TRAP PRIMER CONNECTION.	--	1/2"	4"	2"
HB-1	EXTERIOR HOSE BIBB - ZURN Z-1310 'ECOLOTROL' WITH REMOVABLE KEY, VACUUM BREAKER, AND AUTOMATIC DRAIN. LENGTH TO SUIT WALL THICKNESS. SEE DETAIL BP3.1	--	3/4"	--	--
HB-2	INTERIOR HOSE BIBB - WOODFORD MODEL 24P-1/2 WITH VACUUM BREAKER AND REMOVABLE CHROME TEE HANDLE.	--	1/2"	--	--
JS-1	FLOOR MOUNTED SERVICE SINK - WIKOLHER K-6710 'WHITE' WITH K-8840 WIRE RIM GUARD, K-8283 FAUCET ASSEMBLY AND K-9147 DRAIN ASSEMBLY WITH 2" DEEP SEAL P-TRAP.	1/2"	1/2"	2"	2"
L-1	WALL HUNG LAVATORY - KOHLER K-2032 'GREENWICH' (SIZE 20x18) WITH K-1385 OFFSET OPEN GRID STRAINER, SLOAN EPF-65 OPTIMA AUTO FAUCET, WALL CARRIER, 1/2" STOPS & 1-1/2" P-TRAP. PROVIDE INSULATING JACKET ON WATER AND WASTE LINES.	1/2"	1/2"	1-1/2"	1-1/2"
L-2	WASH BASIN - BRADLEY MODEL MF233 'TERREON' TRIFOUNT WITH SINGLE TEMPERED LINE, PRE-ASSEMBLED THERMOSTATIC MIXING VALVE AND INFRARED SENSORS.	3/4"	3/4"	2"	2"
OD-1	4" OVERFLOW DRAIN - JAY R. SMITH MODEL 1080 WITH UNDER DECK CLAMP, DOME STRAINER, 2" HIGH WATER DAM AND 4" LINE CONNECTION.	--	--	4"	--
RD-1	4" ROOF DRAIN - JAY R. SMITH MODEL 1010 WITH UNDER DECK CLAMP, DOME STRAINER AND 4" LINE CONNECTION.	--	--	4"	--
SH-1	ADA PRE-FAB SHOWER STALL - LASCO MODEL 6030CFS COMPLETE WITH GRAB BARS, FOLDUP SEAT, HAND-HELD SHOWER ASSEMBLY WITH SLIDE BAR, PRESSURE BALANCING MIXING VALVE, SOAP DISH, CURTAIN ROD AND SHOWER CURTAIN, AND PERFORATED STRAINER WITH 2" DEEP SEAL P-TRAP. MOUNT SHOWER HEAD AND FAUCET AT END OF UNIT.	1/2"	1/2"	2"	2"
TP-1	TRAP PRIMER FOR SINGLE DRAIN - ZURN Z-1022L IN LINE PRIMER. MOUNT RECESSED IN WALL BELOW SINK WHERE SHOWN ON PLANS. RUN 1/2" COLD WATER LINE BELOW FLOOR TO SINGLE FLOOR DRAIN OR FLOOR SINK. REFER TO DETAIL LP3.1	--	1/2"	--	--
U-1	WALL MOUNTED URINAL - KOHLER K-4984 'FRESHMAN' WITH SLOAN 8198 OPTIMA PLUS (BATTERY POWERED) SENSOR FLUSH VALVE AND WALL CARRIER. SEE ARCHITECTURAL DRAWINGS FOR MOUNTING HEIGHTS.	--	3/4"	2"	2"
WC-1	ADA FLUSH VALVE WATER CLOSET - KOHLER K-4369 'HIGHCLIFF' WITH ELONGATED BOWL, K-4870C OPEN FROM SEAT, SLOAN 8111 OPTIMA PLUS (BATTERY POWERED) SENSOR FLUSH VALVE AND BOLT CAPS.	--	1"	4"	2"
WC-2	FLUSH VALVE WATER CLOSET - KOHLER K-4369 'YELLOWLINE' WITH ELONGATED BOWL, K-4870-C OPEN FROM SEAT, SLOAN 8111 OPTIMA PLUS (BATTERY POWERED) SENSOR FLUSH VALVE, AND BOLT CAPS.	--	1"	4"	2"
WF-1	4" WALL FLANGE - JAY R. SMITH MODEL 1770 WITH ROUGH BRONZE FINISH, WALL FLANGE AND 4" LINE CONNECTION.	--	--	4"	--
WH-1	ELECTRIC WATER HEATER - A.O. SMITH MODEL ECL-50 WITH 50 GALLON CAPACITY, (7) 4.5 KW NON-SIMULTANEOUS ELEMENTS (208/240V), 3/4" SUPPLIES AND T&P RELIEF VALVE, THERMAL EXPANSION TANK, HEAT TRAP NIPPLES AND SYMMONS T-200 MIXING VALVE. SEE DETAIL AP3.1.	3/4"	3/4"	--	--

**GENERAL NOTES:**

- A- THE CONTRACTOR SHALL CHECK AND VERIFY ALL DIMENSIONS AND CONNECTIONS ON THE JOB SITE. ALL WORK SHALL BE EXECUTED FROM MEASUREMENTS TAKEN AT THE SITE.
- B- THE MECHANICAL CONTRACTOR SHALL BE RESPONSIBLE TO INSURE PROPER CODE CLEARANCES FOR ELECTRICAL AND MECHANICAL ACCESS WHEN INSTALLING ANY EQUIPMENT SUPPLIED BY THE MECHANICAL CONTRACTOR.
- C- IT IS CRITICAL THAT THIS CONTRACTOR COORDINATE EQUIPMENT LOCATIONS WITH PIPING, DUCTWORK, ELECTRICAL CONDUIT AND BUILDING STRUCTURE TO INSURE CODE COMPLIANCE.
- D- CEILING DIFFUSERS ARE SHOWN IN APPROXIMATE LOCATIONS. REFER TO LIGHTING PLANS AND REFLECTED CEILING PLAN FOR EXACT LOCATIONS.
- E- DUCT DIMENSIONS CALLED OUT ON DRAWINGS ARE INSIDE FREE AREA DIMENSIONS. ACOUSTICAL DUCT LINER ARE TO BE ADDED TO OVERALL MEASUREMENTS.
- F- ALL DUCTWORK AND PIPING WHICH PASSES THRU FIRE RATED WALLS TO BE FIRE STOPPED WITH APPROVED FOAM OR SEALANT. REFER TO SPECIFICATIONS FOR APPROVED MANUFACTURERS.

ORIGINAL DRAWING SIGNED BY: DWAYNE C. SUDWEEKS  
DATE ORIGINAL SIGNED: March 11, 2019 ORIGINAL ON FILE AT:  
ENGINEERED SYSTEMS ASSOCIATES 1355 EAST CENTER,  
POCATELLO, IDAHO 83201

**Engineered Systems Associates**  
1355 EAST CENTER  
POCATELLO, IDAHO 83201  
PHONE: (208) 233-0501  
FAX: (208) 233-0529  
EMAIL: esa@engsys.com  
ESA JOB NUMBER: 18071

**nw architects p.a.**  
ARCHITECTURE / PLANNING / INTERIORS  
SCOTT L. NELSON, A.I.A. KEVIN R. BOHLEY, A.I.A. JAMES H. WYATT, A.I.A.  
900 JOHN BOHNS BLDG. P.O. BOX 2212 - IDAHO FALLS, IDAHO 83402-2212  
(P) 208-322-8785 (O) 208-322-8785

ADDITION & REMODEL FOR:  
**MIDWAY ELEMENTARY**  
JEFFERSON JOINT SCHOOL DISTRICT NO. 251  
623 N 3500 E, MENAN, IDAHO 83434

PROJECT:  
SHEET TITLE:  
PLUMBING SCHEDULE AND DETAILS

**REVISIONS**

NO.	DESCRIPTION

PROJECT NO.  
16071  
DATE:  
FEBRUARY 2019  
DRAWN BY:  
M. JENSEN  
CHECKED BY:  
D. SUDWEEKS

DRAWING NO.:

**P3.1**